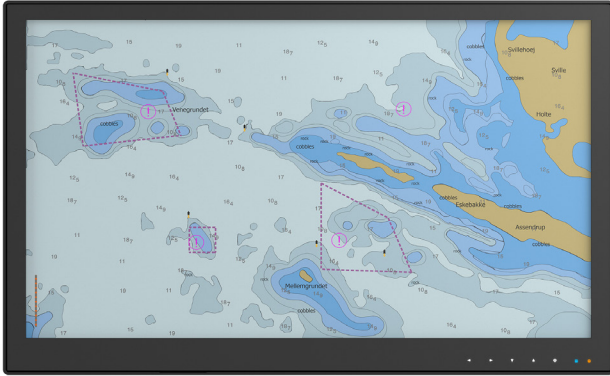


DuraMON 27" S-Line

Wide Screen Monitor for Marine Applications



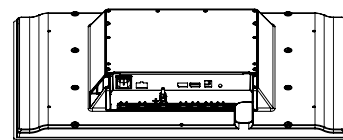
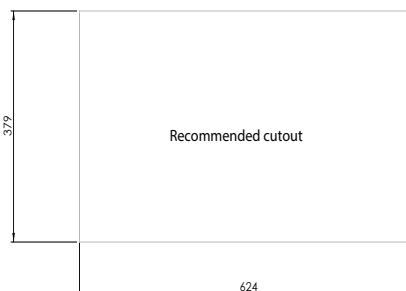
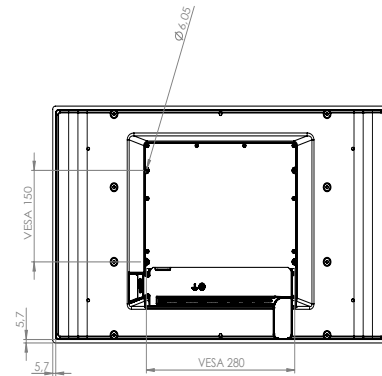
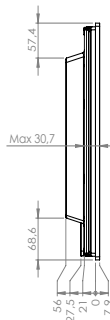
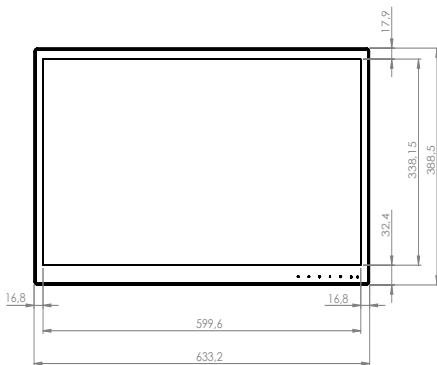
DuraMON 27" S-Line monitors are designed for marine, naval and other demanding environments where reliable and durable hardware is required.

The S-Line product family is an up-to-date and cost efficient design featuring super slim design, narrow bezel, low weight and low power consumption.

- ✓ 60945 Type Approval
- ✓ ECDIS Applications
- ✓ Radar Applications

Mechanical outline

DuraMON 27" S-Line



Table/ceiling bracket available - ISIC PN XXXXX-XXX

Specifications DuraMON 27" S-Line

Display properties

| | |
|-------------------|---------------------------------------|
| Size | 27.0" wide screen |
| Aspect ratio | 16:9 |
| Active area | 597.9 x 336.3 mm |
| Luminance | 300 Cd/m2 typical |
| Contrast | 1000:1 typical |
| Native resolution | 1920 x 1080 (Full HD) |
| View angle | 89° (L/R/T/B) typical |
| Glass | Anti reflective and thermal toughened |
| Touch | P-Cap multi touch |

Input/output terminals

| | |
|----------------|--|
| DP video input | 2 x DP 1.2 |
| USB | 1 x USB type B, touch & virtual serial COM |
| AUX | 1 x 2.5 mm jack, remote control - optional |

Operator control interface & OSD

| | |
|--------|--|
| Power | Power on/off (press for 10 sec. to turn off) |
| Up | Navigate menu / adjust backlight up |
| Down | Navigate menu / adjust backlight down |
| Select | Navigate menu / Select |
| Back | Navigate menu / Back |

Power supply / power consumption

| | |
|------------------|----------------------------------|
| AC power | 100 - 240 VAC 50/60Hz |
| DC power | 24 VDC - optional |
| AC/DC dual power | 100- 240 VAC & 24 VDC - optional |
| Typ. Consumption | 30 W |
| Max. Consumption | 35 W |

Physical dimensions

| | |
|-------------------|-------------------------------------|
| Dimensions | 633.2 (W) x 388.5 (H) x 75.6 (D) mm |
| Dimensions in box | 670 (W) x 490 (H) x 160 (D) mm |
| Weight | 7.0 kg |
| Weight in box | 9.0 kg |

Environmental

| | |
|-------------------|----------------------------------|
| Operating temp. | - 15 to 55° C |
| Storage temp. | - 25 to 70° C |
| Humidity | 8 to 95% relative humidity |
| Protection | IP56 from front - IP22 from rear |
| Materials encl. | Sea water resistant aluminum |
| Surface treatment | Black powder coating RAL 9005 |

Options & Accessories

| | |
|-----------------|---------------------------------------|
| Console bracket | Console mount bracket kit (10065-000) |
| Table bracket | Table/ceiling bracket kit (XXXXX-XXX) |

Approvals & Certificates

| | |
|-------------|-----------------------------------|
| CE mark | EN 61000-6-2 & EN 61000-6-4 |
| Marine | IACS E10 rev. 8 & IEC 60945 ed. 4 |
| Navigation | IEC 62288 ed. 2 |
| Certificate | DNV-MR (Pending) |
| Compass SD | XX cm (stand.) XX cm (steer.) |