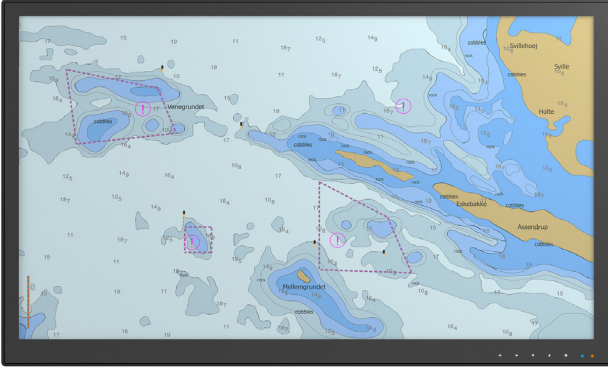


DuraMON 32" S-Line

4K Wide Screen Monitor for Radar/ECDIS



DuraMON 32" S-Line monitors are designed for marine, naval and other demanding environments where reliable and durable hardware is required.

The DuraMON 32" S-Line is an up-to-date and cost efficient design featuring 4K resolution, super slim design, narrow bezel, low weight and low power consumption.

- ✓ 60945 Type Approval
- ✓ ECDIS Applications
- ✓ Radar Applications

Mechanical outline

DuraMON 32" S-Line

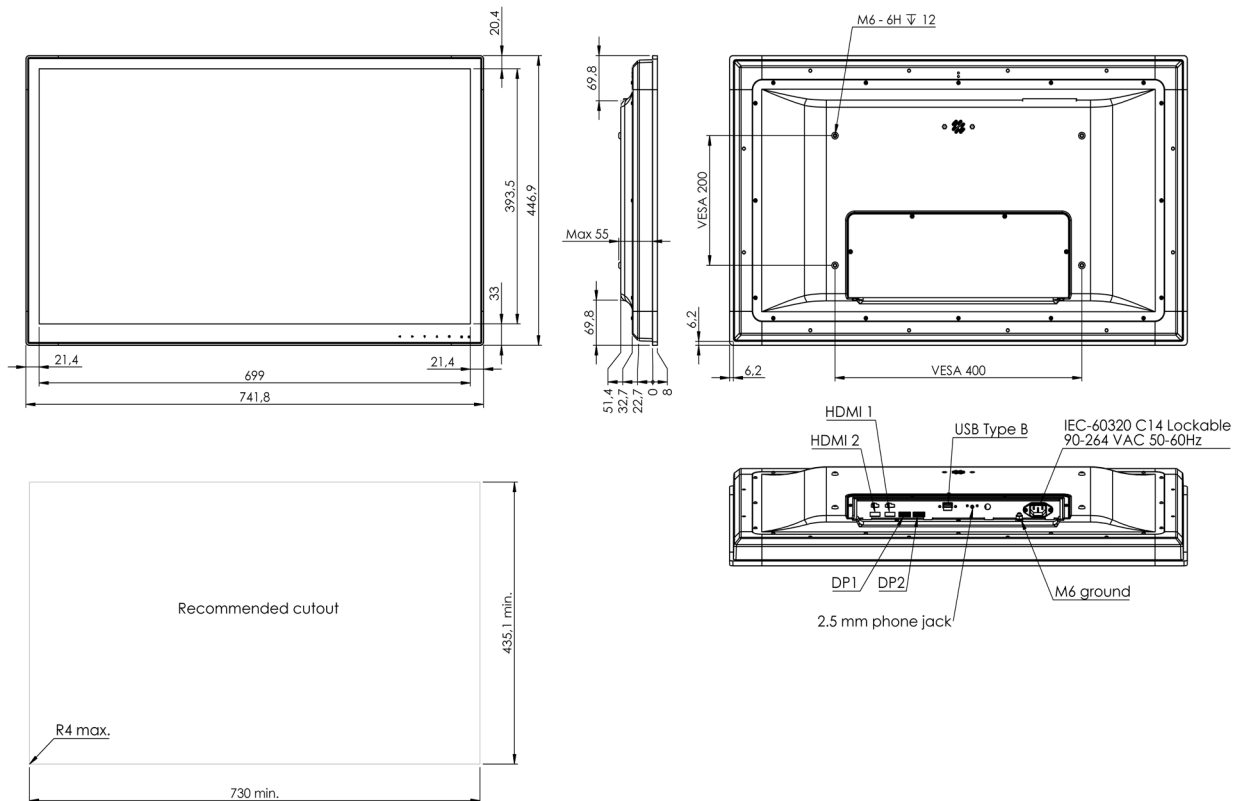


Table bracket available - ISIC PN pending

Changes may occur - for latest please contact sales@isic.dk

Specifications DuraMON 32" S-Line

Display properties

Size	31.5" wide screen
Aspect ratio	16:9
Active area	698.4 x 392.8 mm
Luminance	400 cd/m2
Contrast	3000:1
Native resolution	3840 x 2160 (4K)
View angle	89° (L/R/T/B) typical
Glass	Anti reflection coated front glass

Input/output terminals

DP video input	2 x DP 1.2a Up to 3840 x 2160 60 Hz
HDMI video input	2 x HDMI 1.2 up to 3840 x 2160 30 Hz
USB	1 x USB type B, touch and virtual serial COM
AUX	1 x 2.5 mm Jack, remote control

Operator control interface and OSD

Power	Power on/off (press for 10 sec. to turn off)
Menu	Get OSD menu
Up	Navigate menu / adjust backlight up
Down	Navigate menu / adjust backlight down
Enter	Navigate menu / enter set value

Power supply/power consumption

AC power	90 - 264 VAC 50 - 60Hz
Typ. Consumption	80 W
Max. Consumption	150 W

Physical dimensions

Dimensions	741.8 (W) x 446.9 (H) x 63.4 (D) mm
Dimensions in box	861 (W) x 534 (H) x 159 (D) mm
Weight	15 kg
Weight in box	17 kg

Environmental

Operating temp.	- 15 to 55° C
Storage temp.	- 25 to 70° C
Humidity	8 to 95% relative humidity
Protection	IP65 from front - IP20 from rear
Materials encl.	Sea water resistant Aluminum
Surface treatment	Black Powder coating RAL 9005

Options & accessories

Touch	P-Cap multi touch
ECDIS	Color calibration for ECDIS applications
Table bracket	Table mount VESA bracket (pending)
Table bracket	Table mount side brackets (pending)

Approvals & Certificates

Marine	IACS E10 rev. 8 & IEC 60945 de. 4
ECDIS	IEC 61174 ed. 4
Radar/Navigation	IEC 62388 ed. 2 & IEC 62288 ed. 2
Certificate	DNV, LR, ABS, BV, CCS, KR, Class NK
Certificate	PRS, RINA
Compass SD	180 cm (stand.) 115 cm (steer.)