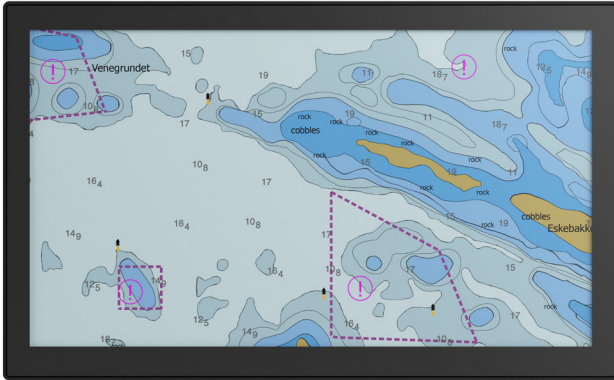


DuraMON 15.6" S-Line

Wide Screen Monitor for Marine Applications



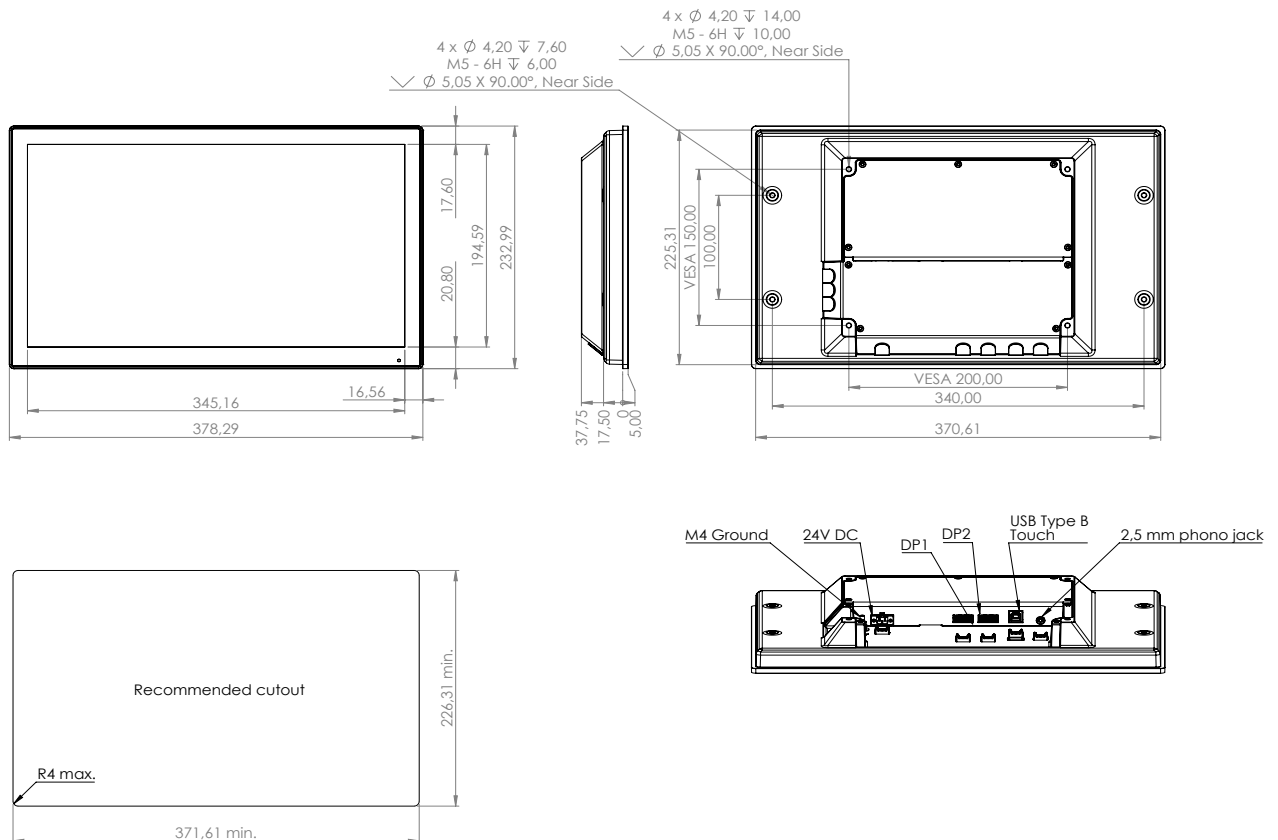
DuraMON 15.6" S-Line monitors are designed for marine, naval and other demanding environments where reliable and durable hardware is required.

The S-Line product family is an up-to-date and cost efficient design featuring super slim design, narrow bezel, low weight and low power consumption.

✓ 60945 Type Approval

Mechanical outline

DuraMON 15.6" S-Line



Table/ceiling bracket available - ISIC PN 09314-000

Specifications DuraMON 15.6" S-Line

Display properties

Size	15.6" wide screen
Aspect ratio	16:9
Active area	344.2 x 193.6 mm
Luminance	500 Cd/m2
Contrast	900:1
Native resolution	1920 x 1080 (Full HD)
View angle	89° (L/R/T/B) typical
Glass	Anti reflection coated front glass
Touch	P-Cap multi touch

Input/output terminals

DP video input	2 x DP 1.2 connector female
USB	1 x USB type B connector, Touch
AUX	1 x 2.5 mm Jack, remote control - optional

Operator control interface & OSD

Power stand by	DDC/CI via DisplayPort
Dimming	DDC/CI via DisplayPort
Display properties	DDC/IC via DisplayPort
Input select	DDC/CI via DisplayPort
Day, night, dusk	DDC/CI via Display port

Power supply / power consumption

DC power	18 - 36 VDC
Typ. consumption	17.5 W
Max. consumption	21.5 W

Physical dimensions

Dimensions	378 (W) x 233 (H) x 43 (D) mm
Dimensions in box	473 (W) x 338 (H) x 168 (D) mm
Weight	2.6 kg
Weight in box	3.4 kg

Environmental

Operating temp.	- 15 to 55° C
Storage temp.	- 25 to 70° C
Humidity	8 to 95% relative humidity
Protection	IP65 from front - IP22 from rear
Materials encl.	Sea water resistant Aluminum
Surface treatment	Black Powder coating RAL 9005

Options & accessories

Remote control	ISIC tactile key pad - pending
Table/ceiling	Table/ceiling mounit bracket (09314-000)
Table stand	VESA adaptor plate for stand (09335-000)

Approvals & Certificates

CE mark	EN 61000-6-2 & EN 61000-6-4
Marine	IACS E10 rev. 8 & IEC 60945 ed. 4
Navigation	IEC 62288 ed. 2
Certificate	DNV
Compass SD	110 cm (stand.) 70 cm (steer.)