

## NPD1569

### 15.6" FHD IP65 Sunlight Readable Multi-Touch Marine Display

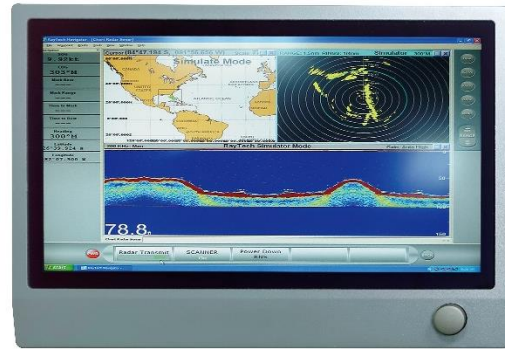
NAVPIXEL NPD1569, the high-performance, rugged touch monitor, is specially engineered to survive from the most demanding working environment. Housed in a milled billet aluminum case, the slim -profile NAVPIXEL NPD1569 is light weight and watertight. The front-mounted sunlight readable touch screen makes the industrial rugged monitor vividly and user-friendly. In addition, the high power efficiency and low heat design guarantee the stability and longevity required for mission critical deployment.

#### Features:

- 1800 nits Sunlight Readable LCD
- Long Life, Low Power Consumption LED Backlight
- Rotary and push knob (OSD MENU)
- Wide Operating Temperature
- Advanced Optical Bonding (AOT)
- High Shock & Vibration Resistance
- Projected Capacitive Multi-Touch Support
- Full Flat Design
- IP65 Facial Waterproof
- Isolation Power 9-36V DC Input

#### Application:

- Marine



### Specifications

V1

<b>Model Number</b>	<b>NPD1569</b>
<b>Description</b>	<b>15.6" FHD IP65 Sunlight Readable Multi-Touch Marine Display</b>
<b>Backlight</b>	LED Backlight
<b>Active Display Area</b>	344.16 x 193.59mm
<b>Brightness</b>	1800 cd/m <sup>2</sup>
<b>Resolution</b>	1920x1080 (FHD)
<b>Aspect ratio</b>	16 : 9
<b>Contrast Ratio</b>	1200:1
<b>Pixel Pitch (mm)</b>	0.17925(H) x 0.17925(V)
<b>Pixel per inch (PPI)</b>	141
<b>Viewing Angle</b>	170°(H),170°(V)
<b>Display Color</b>	16.2M
<b>Response Time</b>	25ms
<b>Inputs</b>	VGAX1, DVI-Dx1, HDMIx1, DPx1, Compositex1, RS232x1, USBx1
<b>Mechanical</b>	
<b>IP Rating</b>	Facial waterproof to IP65 standards when console mounted.
<b>Construction</b>	Rugged SPCC Chassis
<b>Mounting</b>	Panel (Flush) mount, VESA mount
<b>Dimension (mm)</b>	393.9(W)x285(H)x61.2(D)
<b>Net Weight</b>	5.2Kg
<b>Power</b>	
<b>Voltage</b>	DC Input Voltage: DC 9~36V
<b>Power Consumption</b>	32W
<b>Environmental</b>	
<b>Operating Temperature</b>	-30°C~80°C
<b>Non-Operating Temperature</b>	-30°C~85°C
<b>Certification</b>	Designed to meet CE / FCC Class A
<b>Marine Type Approval</b>	

Specifications are subject to change without notice.

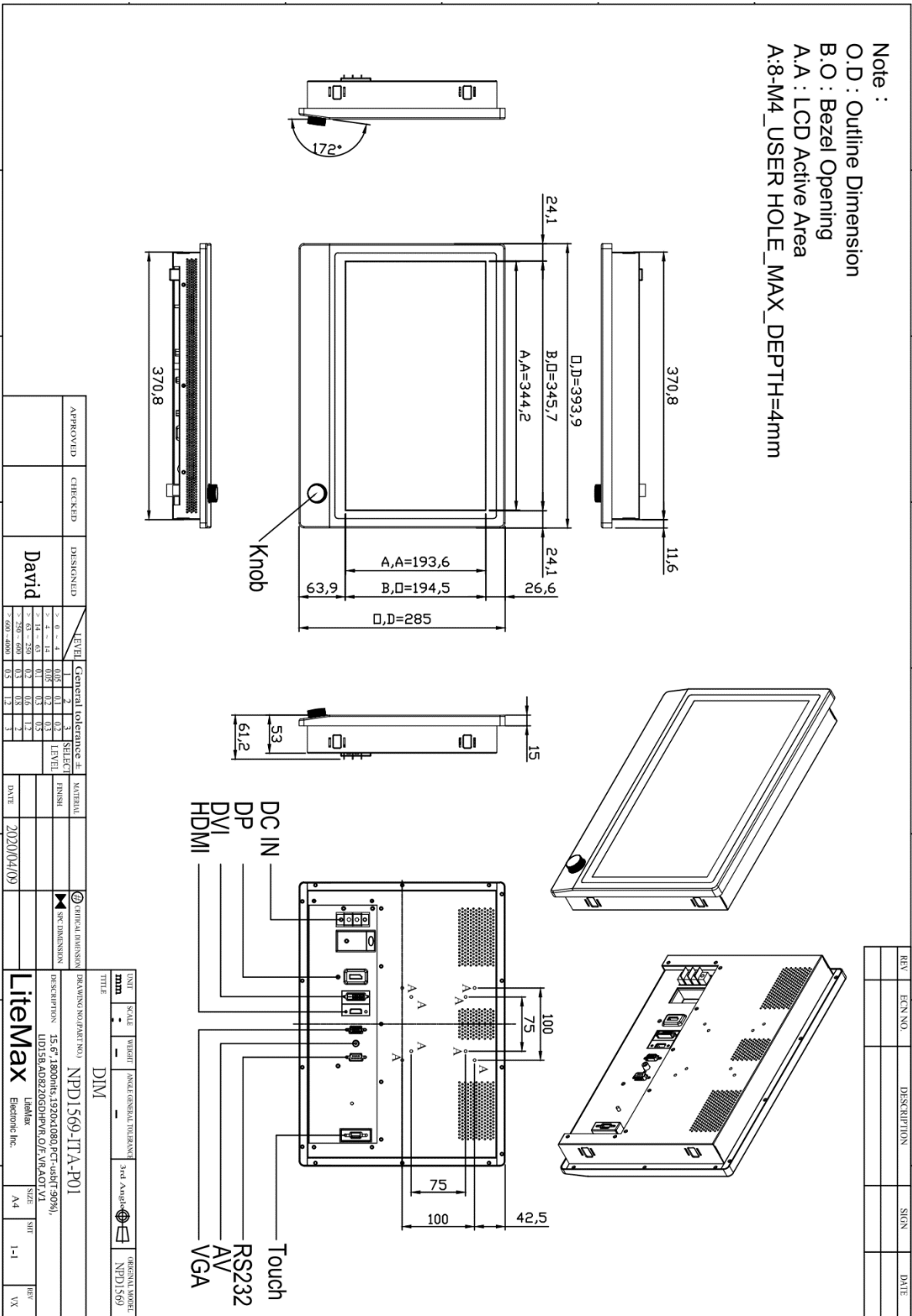
All brands or product names are trademarks or registered trademarks of their respective companies.



# Mechanical Drawing

## Outline Dimensions

Unit:mm



APPROVED	CHECKED	DESIGNED	LEVEL	General tolerance ±	MATERIAL	DATE
		<b>David</b>	1 2 3	0.1 0.05 0.3		2020/04/09

REV	ECN NO.	DESCRIPTION	SIGN	DATE

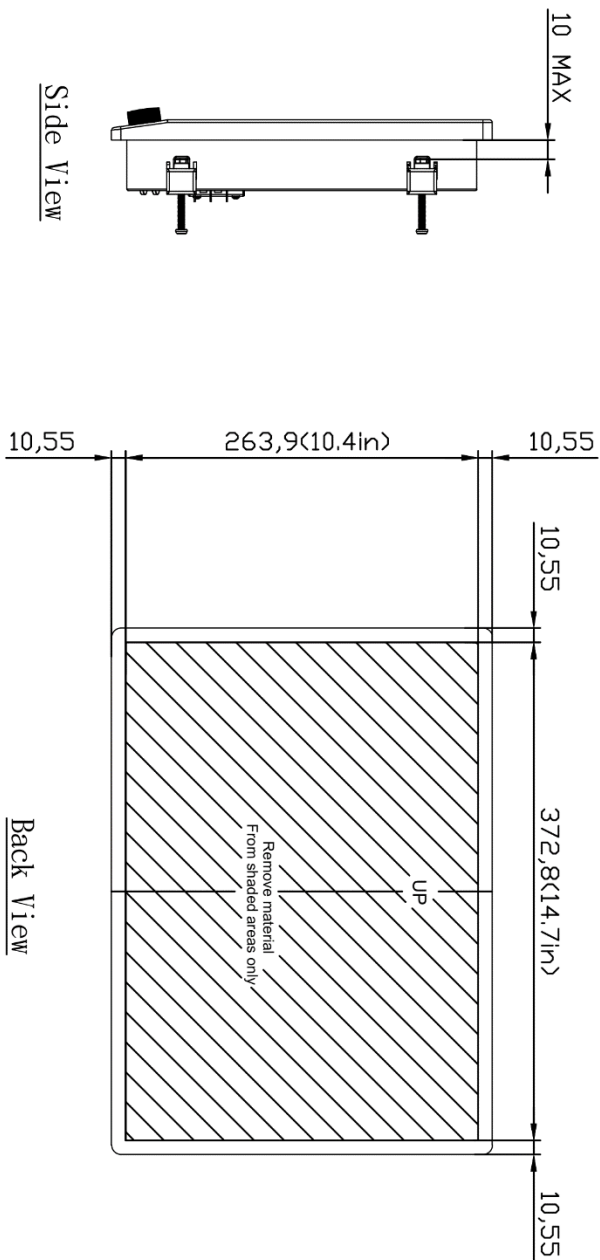
DWG NO.	SCALE	WEIGHT	INDUSTRY STANDARD	3rd Angle Projection	ORIGINAL SHEET

TITLE	DIM

DESCRIPTION	SIZE	SHT	REV
<b>LiteMax</b> Electronic Inc.	A4	1-1	VX



REV	ECN NO	DESCRIPTION	SIGN	DATE



APPROVED	CHECKED	DESIGNED	LEVEL	General tolerance ±	SELECT LEVEL	MATERIAL	DATE	CRITICAL DIMENSION	SPEC DIMENSION	DRAWING NO (PART NO)	TITLE	UNIT	SCALE	WEIGHT	ANGLE GENERAL TOLERANCE	3rd Angle	ORIGINAL NUMBER
		David	> 0 - 4	0,05	1		2020/04/09			NPD1569-ITTA-P01	DIM	mm	1:1		3rd Angle		NPD1569
			> 4 - 14	0,05	2					15.6", 1800hrs, 19.20x1.080 PCT-usBT-90%,							
			> 14 - 250	0,2	3					LID158, A08220GH/PR O/E VR, A0T V1							
			> 250 - 600	0,3	4												
			> 600 - 1000	0,5	5												



**Ordering Information**

Part Number	Description
NPD1569-ITA-P01	15.6",1800nits,1920x1080,PCT-usb(T:90%),LID15B,AD8220GDHPVR,O/F,VR,AOT,V1

**Optional Accessories**

Part Number	Description
112615315401 x(4)	Metal,SPCC,NPS,1531,Lock,V0,P
214032121101 x(4)	Screw,M4,32mm,Round,Ni,P
460100002101 x(4)	Fixture,other,MP-4,V0,P
980000560010 (Optional)	SET,OTHER,ADAPTER REWORK.60W KPA-060F WITH Y TYPE.TERMINAL,P
810618301010 (Optional)	CABLE.POWER.AC.1830mm USA type
810618301090 (Optional)	CABLE.POWER.AC,1830mm Europe type
810618301050 (Optional)	CABLE.POWER.AC.1830mm UK type
810618301170 (Optional)	CABLE.POWER,AC,1830mm Australia type
810618301030 (Optional)	CABLE.POWER.AC.1830mm Japan type